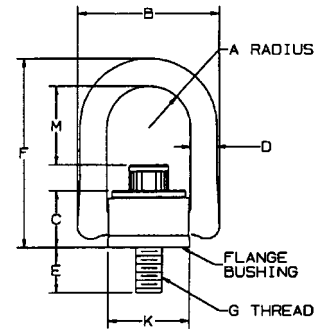


**CM heavy duty hoist rings**

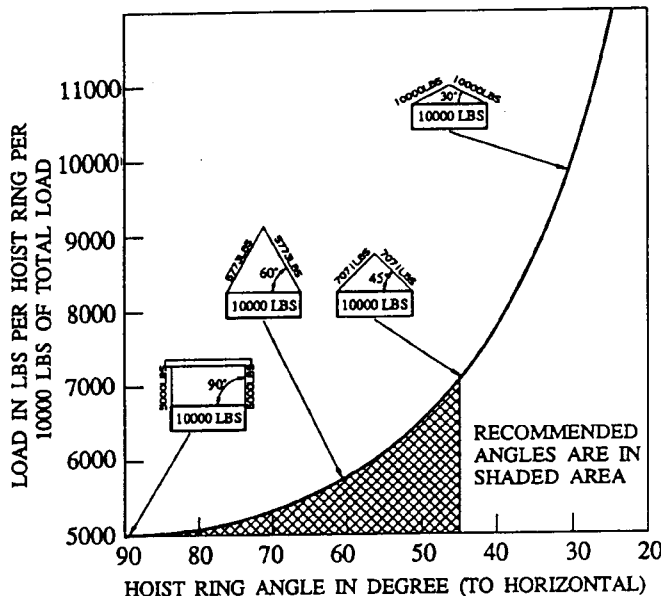
- Side pins and bale constructed of one piece forged alloy steel
- Less moving parts than competitive rings
- Bale and center body are closed die forged to assure superior grain flow and consistent dimensional accuracy
- 100% magnetic particle inspected
- Patented product specified in wide range of industries
- Larger bale allows use of a variety of hook sizes
- Easy disassembly for periodic non-destructive inspection
- Capacities range from 550-30,000 lbs.
- Economically priced



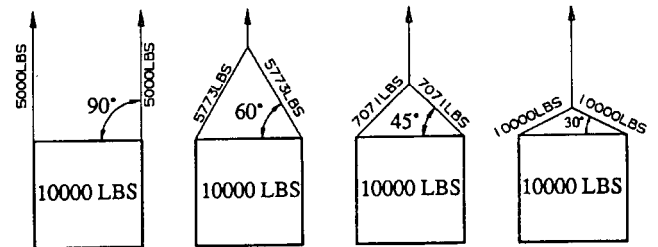
| Product code | Working load limit (lbs.) | A    | B    | C    | D    | E    | F    | G       | K    | RTL* (ft./lbs.) | M    | Net Weight (lbs.) |
|--------------|---------------------------|------|------|------|------|------|------|---------|------|-----------------|------|-------------------|
| 433112       | 550                       | .65  | 2.29 | .96  | .44  | .56  | 3.23 | 1/4-20  | 1.25 | 5               | 1.57 | .50               |
| 433212       | 800                       | .65  | 2.29 | .96  | .44  | .56  | 3.23 | 5/16-18 | 1.25 | 7               | 1.51 | .52               |
| 433214       | 800                       | .65  | 2.29 | .96  | .44  | 1.06 | 3.23 | 5/16-18 | 1.25 | 7               | 1.51 | .54               |
| 433312       | 1,000                     | .65  | 2.29 | .96  | .44  | .56  | 3.23 | 3/8-16  | 1.25 | 12              | 1.45 | .56               |
| 433314       | 1,000                     | .65  | 2.29 | .96  | .44  | 1.06 | 3.23 | 3/8-16  | 1.25 | 12              | 1.45 | .58               |
| 433515       | 2,500                     | 1.00 | 3.50 | 1.50 | .75  | 1.00 | 5.31 | 1/2-13  | 1.89 | 28              | 2.56 | 1.72              |
| 433516       | 2,500                     | 1.00 | 3.50 | 1.50 | .75  | 1.25 | 5.31 | 1/2-13  | 1.89 | 28              | 2.56 | 1.82              |
| 433614       | 4,000                     | 1.00 | 3.50 | 1.50 | .75  | 1.00 | 5.31 | 5/8-11  | 1.89 | 60              | 2.44 | 1.78              |
| 433615       | 4,000                     | 1.00 | 3.50 | 1.50 | .75  | 1.25 | 5.31 | 5/8-11  | 1.89 | 60              | 2.44 | 1.88              |
| 433714       | 5,000                     | 1.00 | 3.50 | 1.50 | .75  | 1.00 | 5.31 | 3/4-10  | 1.89 | 100             | 2.31 | 1.89              |
| 433716       | 5,000                     | 1.00 | 3.50 | 1.50 | .75  | 1.50 | 5.31 | 3/4-10  | 1.89 | 100             | 2.31 | 2.02              |
| 433102       | 7,000                     | 1.40 | 5.10 | 2.05 | 1.00 | 1.20 | 7.00 | 3/4-10  | 2.81 | 100             | 3.20 | 7.23              |
| 433103       | 7,000                     | 1.40 | 5.10 | 2.05 | 1.00 | 1.70 | 7.00 | 3/4-10  | 2.81 | 100             | 3.20 | 7.25              |
| 433101       | 8,000                     | 1.40 | 5.10 | 2.05 | 1.00 | 1.20 | 7.00 | 7/8-9   | 2.81 | 160             | 3.07 | 7.33              |
| 433105       | 10,000                    | 1.40 | 5.10 | 2.05 | 1.00 | 1.45 | 7.00 | 1-8     | 2.81 | 230             | 2.95 | 7.57              |
| 433106       | 10,000                    | 1.40 | 5.10 | 2.05 | 1.00 | 1.70 | 7.00 | 1-8     | 2.81 | 230             | 2.95 | 7.63              |
| 433107       | 10,000                    | 1.40 | 5.10 | 2.05 | 1.00 | 2.45 | 7.00 | 1-8     | 2.81 | 230             | 2.95 | 7.81              |
| 433401       | 15,000                    | 2.00 | 6.75 | 2.87 | 1.25 | 2.63 | 9.22 | 1 1/4-7 | 3.88 | 470             | 3.74 | 16.00             |
| 433420       | 20,000                    | 2.00 | 6.75 | 2.87 | 1.25 | 2.63 | 9.22 | 1 3/8-6 | 3.88 | 670             | 3.62 | 17.20             |
| 433424       | 24,000                    | 2.00 | 6.75 | 2.87 | 1.25 | 2.63 | 9.22 | 1 1/2-6 | 3.88 | 800             | 3.49 | 18.10             |
| 433427       | 30,000                    | 2.00 | 6.75 | 2.87 | 1.25 | 2.96 | 9.22 | 2-4 1/2 | 3.88 | 800             | 3.49 | 22.90             |
| 433432       | 30,000                    | 2.00 | 6.75 | 2.87 | 1.25 | 2.96 | 9.22 | 2-8     | 3.88 | 800             | 3.49 | 22.90             |

Replacement screws are available. Contact customer service for details.  
 All sizes in inches unless otherwise specified.  
 \*Recommended torque load.

**Angular Lifting Graph**



**Effect of Hoist Ring Angle on Load**



**INSTALLATION INSTRUCTIONS:** Drill and tap workpiece for hoist ring screw with axis vertical to mounting surface. Work surface should be flat and smooth to provide full 360° flush seating for the bushing flange. (SAFETY NOTE: Some loosening may develop after prolonged service in a permanent installation. It is advisable to periodically re-tighten the mounting screw to maintain the specified torque value.) The use of free fit spacers between the bushing flange and mounting surface is not recommended as this will reduce the safe load rating on angularly applied loads. Hoist ring must be free to swivel 360° and pivot 180° at all times.

**\*WARNING**  
 See page 164